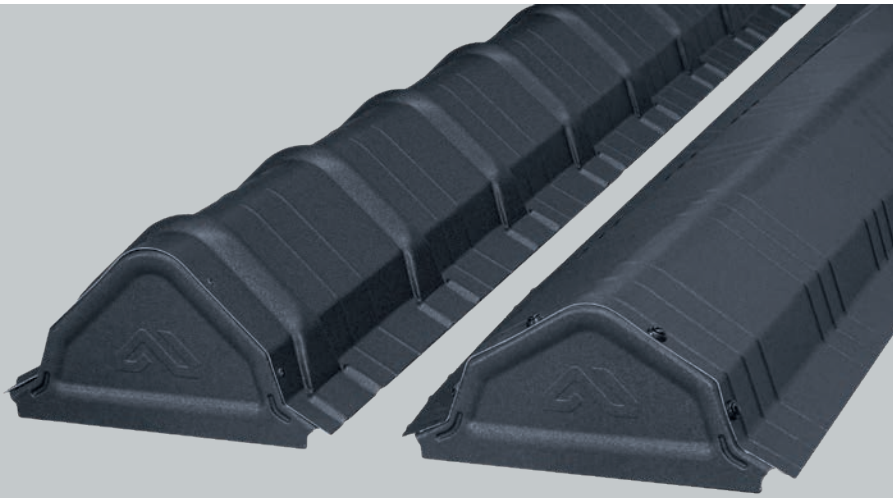




# Budmat.

Modular Roofs

## INNOVATION



## Ridge cap stop end GSM-TOP and GSM-FLAT

New  
in offer

Elements fixed to ridge cap at the ridge ends.  
They provide aesthetic and functional roof protection  
while maintaining material homogeneity.

### Features and references

- Perfect factorymade GSM-TOP and GSM-FLAT stop end.
- Two types of stop ends are used to close the main or diagonal ridge.
- Shapes match with the GSM-TOP and GSM-FLAT ridge caps, thus eliminate the need for self-made elements on the construction site.
- Fast and easy assembly of elements with 4,8x19 farmer screws or coated rivets.
- Made of one element in the deep drawing process.
- They are distinguished by an ideal profiling and decorative shape.
- High quality of material and precise production guarantee perfect, durable and exceptionally aesthetic roof finish.
- Guarantee of compatibility and colour consistency with GSM-TOP and GSM-FLAT ridge caps.
- The elements are an integral part of the whole modular roofing system.

**+48 502 197 197**  
**budmat.com**

### Ridge cap stop end GSM-TOP



Width	248 mm
Height	142 mm
Depth	35 mm
Thickness	0,5 mm
Material	<b>Sheet steel S280</b> galvanized Z275 with organic coatings X-MATT BT SP30 D-MATT SP35
Quantity per package	10 pieces
Colors	8

### Ridge cap stop end GSM-FLAT



Width	272 mm
Height	125 mm
Depth	35 mm
Thickness	0,5 mm
Material	<b>Sheet steel S280</b> galvanized Z275 with organic coatings X-MATT BT SP30 D-MATT SP35
Quantity per package	10 pieces
Colors	8

### Available colours

**X-MATT BT SP30**  
Black 015/RAL 9005  
Graphite 455/RAL 7024  
Brown 384/RAL 8017

**D-MATT SP35**  
Black RAL 9005  
Graphite RAL 7024  
Brown RAL 8017  
Brick-red RAL 8004  
Anthracite RAL 7016

# Installation manual for the ridge cap stop end

Follow all applicable health and safety regulations.

Always wear protective clothing and gloves when working. Avoid contact with sharp edges of the sheet metal.

Be extremely careful when moving around and doing work on the roof.

When assembling, use a safety rope and shoes on a soft sole.



1

Fit the stop end by sliding it under the ridge cap.



2



After fitting, drill in the Ridge cap 2 holes [1], [2] around the perimeter on the top.



3



Connect the stop end to the ridge cap with farmer screws [1], [2] or coated rivets.



4



Drill 2 more holes [3], [4] around the perimeter, on the sides.



5



Connect the stop end to the ridge cap using two more screws [3], [4] or coated rivets.



**The assembly method described refers to both the GSM-FLAT and GSM-TOP ridge cap stop end.**

**SCAN THE QR CODE  
AND SEE THE VIDEO  
WITH THE INSTALLATION  
MANUAL**

